

## Using the Text Editor

### Introduction

This TechNote describes how to use ROTALIGN<sup>®</sup> PRO's text editor. The text editor opens automatically when certain editing choices are made in the normal course of operations, such as when 'Save As' is selected in the File menu. This allows you to key in a desired file name. when 'Edit location' is chosen in the File menu, information related to the file may be keyed in. Other choices involving entering text include: naming of machines (accessed through "Machine Type" under 'ID', from the main menu or from the Dimensions screen); and editing comments for events during the alignment job, such as alignment readings taken or moves made, accessed from the Results screen through the "History" soft key, or through "Job Sheet" from the main menu.

### Using the Text Editor

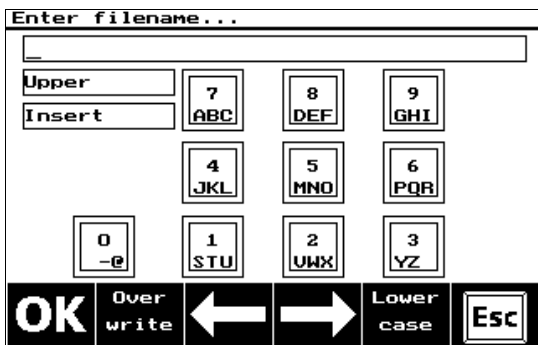


Figure 1

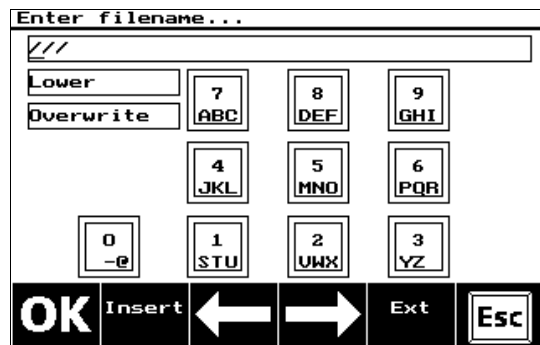


Figure 2

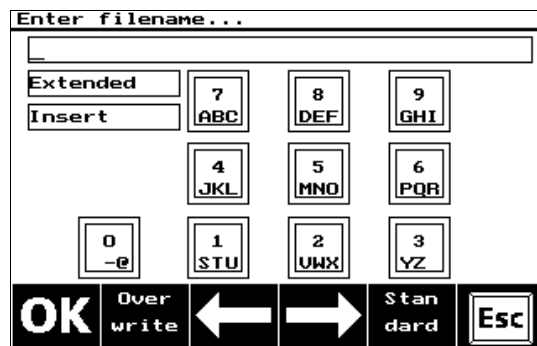


Figure 3

The Text Editor allows you to key in characters in similar manner to a cell phone. Each press of a number key cycles through the letters and numeral shown for that key in the alpha-numeric keypad. Simply stop when the character you want is displayed, pause, and the cursor automatically advances to the next position. If you make a mistake, simply press the **CLR** key.

This deletes the last entry. The **←** and **→** softkeys let you position the cursor anywhere

in the text line. The second softkey from the left lets you choose between overwriting characters (**Over write**) or inserting characters (**Insert**), (see Figures 1 and 2). The currently selected settings are shown on the screen to the left of the alpha-numeric keypad.

The **.**, **/**, and **-** hardkeys can be used to key in those characters directly.

Different character entry options can be accessed by pressing the fifth softkey from the left. Each time you press this softkey the option will change:

- For lower case characters press the softkey when it displays **Lower case** (see Figure 1).
- For standard characters press the **Standard** softkey, (see Figure 3).
- Additional characters or symbols can be accessed with the **Ext** softkey (for Extended character set), (see Figure 2). The extended character set gives you access to additional characters not shown in the alpha-numeric keypad display. Simply press the appropriate number key and cycle through all of the available characters until the one you want appears, then pause. The extended character set lets you cycle through the following characters in the following order:

0: [space] 0 + - = < >

1: S T U 1 Ü : ;

2: V W X 2 ( ) "

3: Y Z 3 \* ! ? %

4: J K L 4

5: M N O 5 ñ õ /

6: P Q R 6 # . ,

7: A B C 7 Ä Å Ç

8: D E F 8 Ē &

9: G H I 9

☐

*Note: ROTALIGN® PRO is a registered trademark of Prüftechnik A.G.*