

---

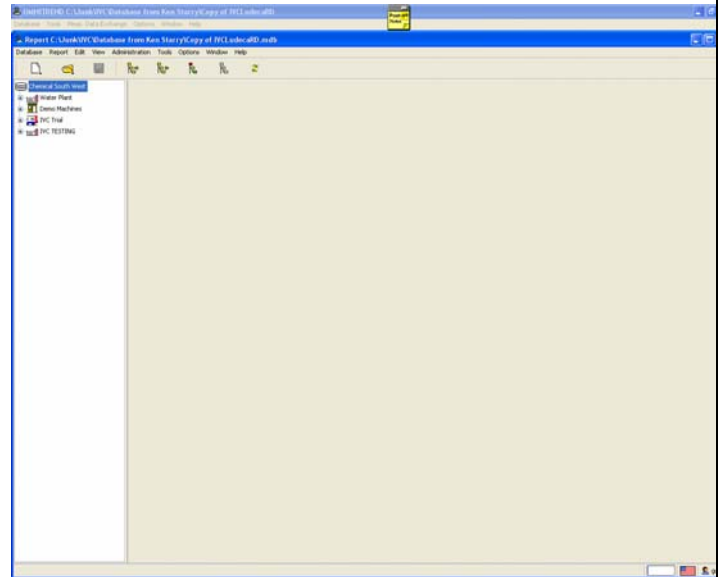
## Export Frequency Markers

---

**Each database must be pre-registered in OMNITREND and Web Report or the import/export functions will not work**

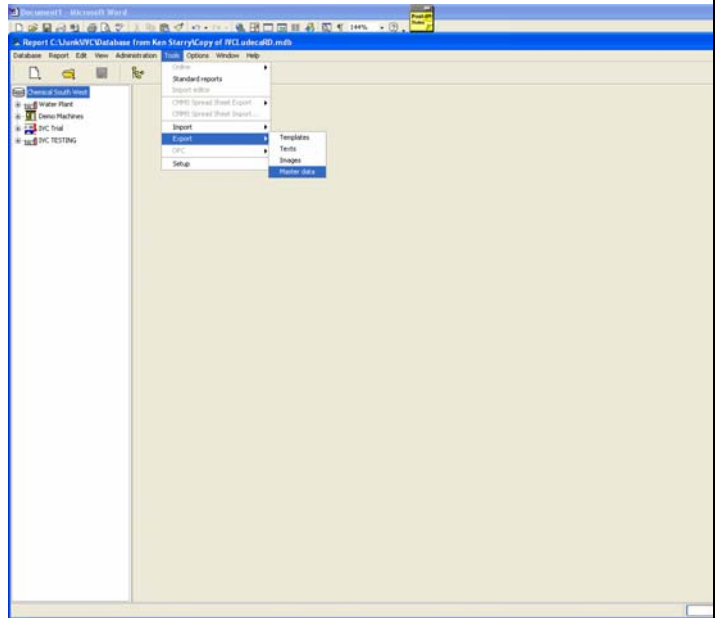
Step 1.

Open Web Report



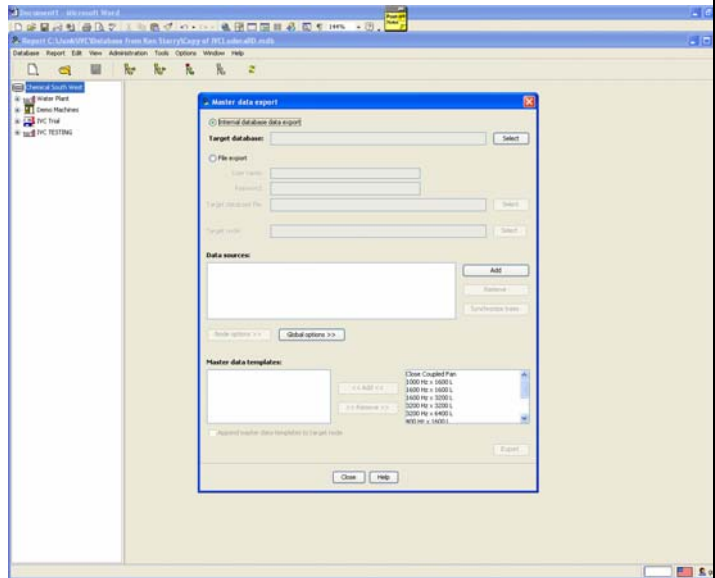
Step 2.

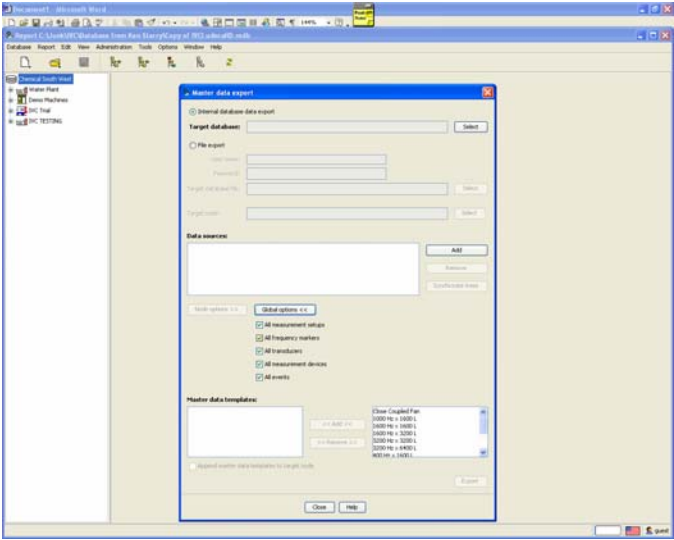
Select Tools and select the export option and master data.



Step 3.

Select the internal database option and select the target database you wish to export data. Web Report will export data from the database you currently have open in OMNITREND.



<p>Step 4.</p>	<p>Select the global options and select the options (freq. markers, etc) you wish to export into the selected database.</p> 
<p>You can also select templates to export from the database currently open in OMNITREND into the target database.</p>	
<p>Ste5.</p>	<p>Select the <b>export</b> button. The data should be exported into the target database.</p>